

Histoglass
Installation Instructions
Thin Double Glazing

*For Installation in
Timber & Steel Frames*

Timber Frames

Histoglass is an extensively tested product which requires specific installation and this differs from regular double glazing installation. If the manufacturer's installation instructions are not followed, the product will automatically lose its guarantee.

Installation

1. Rout the profile for a deeper rebate if necessary.
2. Primer the profile with (preferably) an oil based paint. Please contact us when using linseed oil based paints as these are not compatible with Kawo Elastokitt.
3. When working on casement windows: to ensure adequate drainage, drill 2 holes of 6-8mm through the lower sill at an angle, starting from the inside horizontal lower plane to the outside vertical plane of the lower sill.

4. Apply the Kawo Elastokitt to the rebate.
5. Put the glass in place, using wooden spacers (1.5mm on all sides) and secure with sprigs.
6. Fill the clearance between glass and frame completely with the Kawo Elastokitt sealant.
7. Using the Elastokitt as a putty, fill the remainder of the rebate (min. 7mm).
8. When painting the windows, the paint should cover the putty completely, overlapping onto the glass about 1-2mm. This is necessary to prevent water getting into the gap between the frame and glass as this could cause the wood to rot and affect the glass sealant. This is essential to maintain the manufacturer's guarantee.
9. Kawo Elastokitt can be painted using both water and oil-based paints, however, water based paints can crack and discolour. Please note: particularly when using dark colours the surface of the putty can become slightly undulated.

This is caused by natural components in the putty. This has only a visual effect and does not affect the quality. This effect can also be caused by the wood not being able to absorb these natural components. This does not influence the quality of the end product and as such constitutes no grounds for a claim.

10. Kawo Elastokitt is not compatible with linseed oil paints! When using linseed based paints, please contact us. When in doubt about the compatibility of certain paints with the installation products, please contact us for advice. For any other systems used which differ from the ones discussed here, written permission should be secured in order to maintain the guarantee of the glazing system.

11. On the inside, use the Elastokitt to seal the gap between the glass and frame.

Metal Frames

Histoglass is an extensively tested product which requires specific installation and this differs from regular double glazing installation. If the manufacturer's installation instructions are not followed, the product will automatically lose its guarantee.

Installation

1. Prepare the rebate: remove any old putty and sealant and clean thoroughly.
2. Primer the profile with (preferably) an oil based alkyd paint. Please contact us when using linseed oil based paints as these are not compatible with Kawo Elastokitt.
3. Apply the Kawo Elastokitt as a sealant in the rebate.
4. Put the glass in place, using wooden spacers (1.5mm on all sides) and secure with pin or screw.
5. Fill the clearance between glass and frame completely with the Kawo

- Elastokitt and use Elastokitt to create the putty line.
6. After 1-2 days the Elastokitt can be painted. The paint should cover the putty completely, overlapping onto the glass about 1-2mm. This is necessary to prevent water getting into the gap between the frame and glass, which can damage the metal frame and perimeter seal of the unit. This is essential to maintain the manufacturer's guarantee.
 7. Kawo Elastokitt can be painted using both water and oil-based paints, however, water based paints can crack and discolour. Please note: particularly when using dark colours the surface of the putty can become slightly undulated. This is caused by natural components in the putty. This has only a visual effect and does not affect the quality. This effect can also be caused by the metal not being able to absorb these natural components. This does not influence the quality of the end product and as such constitutes no grounds for

a claim.

8. Kawo Elastokitt is not compatible with linseed oil paints! When using linseed based paints, please contact us. When in doubt about the compatibility of certain paints with the installation products, please contact us for advice. For any other systems used which differ from the ones discussed here, written permission should be secured in order to maintain the guarantee of the glazing system.

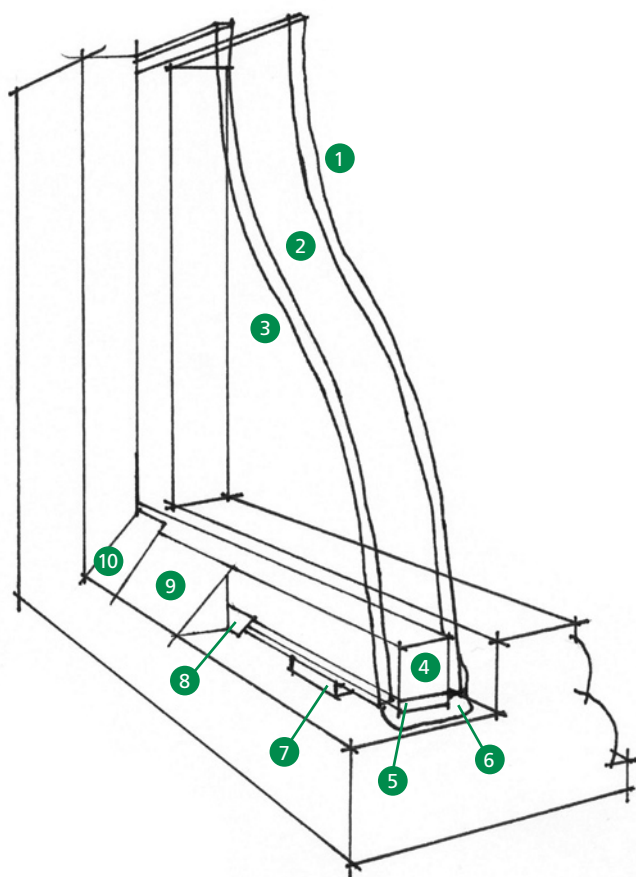
9. On the inside, use the Elastokitt to seal the gap between the glass and frame.

Guarantee

All Dörr Histoglass glazing has a 7 year guarantee from date of invoice against interior surface condensation. In the unlikely event of a manufacturing fault causing this condensation, Histoglass will provide a replacement free-of-charge. No additional claims can be made.

The variations MD (Genuine Machine Drawn Glass), GD (Genuine Hand Drawn Glass) and Cylinder Glass have the same characteristics as 'old glass' and will have the same imperfections (bubbles, fold marks or waves). These imperfections are an integral part of the character of the glass and, as such, obviously constitute no reason for a claim.

Annual inspections of the glazing, frame, and paintwork are necessary. These checks are essential and must be proven in the event that any subsequent claim may arise.



- 1. Low-E float glass inner pane
- 2. Gas-filled cavity
- 3. Outer pane
- 4. Aluminium spacer bar
- 5. Perimeter seal
- 6. Sealant – Kawo Elastokitt
- 7. Hardwood spacer
- 8. Sprig
- 9. Putty line – Kawo Elastokitt
- 10. Paint overlapping onto glass by 1-2mm

info@histoglass.co.uk
www.histoglass.co.uk

Tel +44 (0)1423 500 844
Fax +44 (0)1423 531 811

Belvedere House
Victoria Avenue
Harrogate, HG1 1EL

Installation Instructions

Thin Double Glazing

Histoglass Ltd
Belvedere House
Victoria Avenue
Harrogate
HG1 1EL

T +44 (0)1423 500 844
F +44 (0)1423 531 811

info@histoglass.co.uk
www.histoglass.co.uk